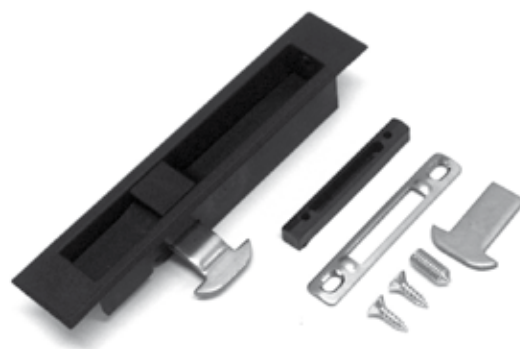


Maniglia laterale per scorrevoli

Maniglia ad incasso per chiusure laterali nei serramenti scorrevoli. La cassa e la leva interna sono realizzate in nylon caricato con fibre di vetro. E' reversibile.



DOTAZIONI

- 1 grano 6MA x 14
- 2 viti autofilettanti 3,9 x 14
- 1 gancio in acciaio
- 1 riscontro in nylon

Side handle for sliding doors and windows

Flush-mounted handle for side-locks on sliding windows. The frame body and the internal lever are fiberglass-reinforced nylon. It is reversible.

SUPPLIED PARTS

- 1 grub screw 6MA x 14
- 2 self-tapping screws 3,9 x 14
- 1 steel hook - 1 nylon check plate
- 1 grub screw 5MA x 5

art. **01900.00.00**



- scatola da 20 pezzi
- box with 20 units

